



Quick Start for GROOV-AT1

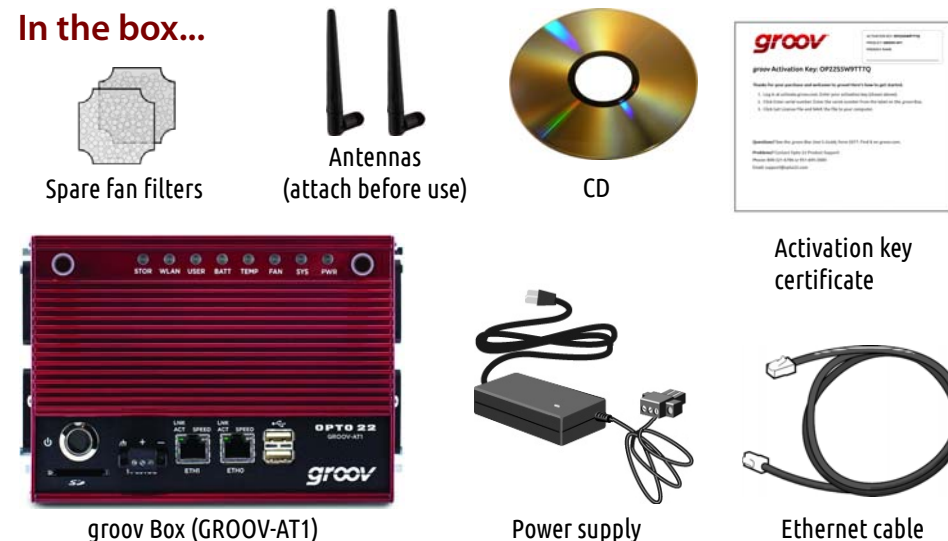
Open →

1 Unpack the *groov* Box

You need:

- A computer with a web browser on the same network you'll use for the *groov* Box. We recommend Chrome, Firefox, or Internet Explorer 10 or newer. The network should have DHCP and DNS.
- One of the following on the same network as your computer: a Modbus/TCP-compatible PLC, sensor, meter, or other device; an OPC UA compatible server communicating with your automation system or equipment; or an Opto 22 SNAP PAC controller running a PAC Control strategy (firmware R9.2a or newer)

In the box...



2 Get Started

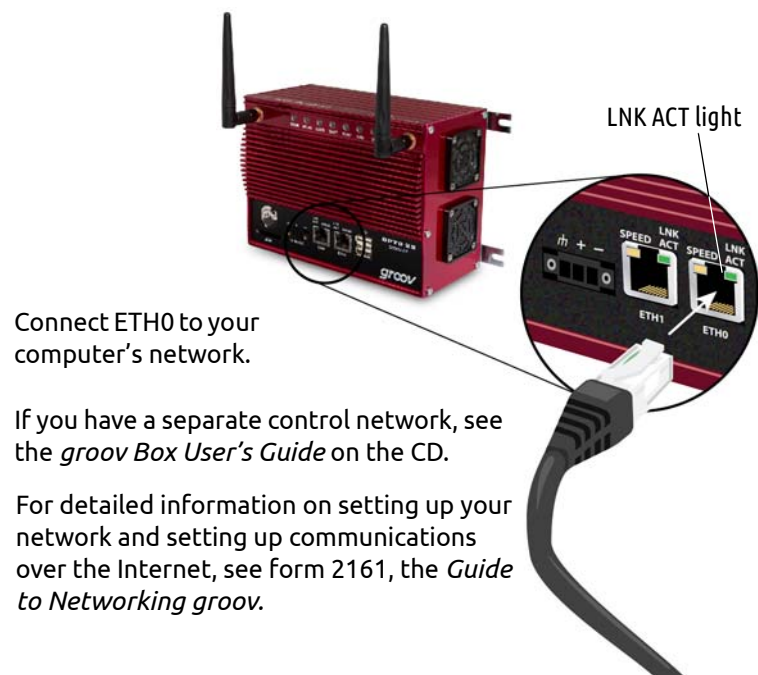
To set up the *groov* Box, you'll use the *groov* Box components shown below.

When deciding where to place the *groov* Box, make sure there is room around the front, top, and sides of the *groov* Box to allow air to flow freely around the device.

Peel the label from the Activation Key Certificate and affix it to the top of the *groov* Box. You need to be able to see this information.



3 Connect to the network



Connect ETH0 to your computer's network.

If you have a separate control network, see the *groov* Box User's Guide on the CD.

For detailed information on setting up your network and setting up communications over the Internet, see form 2161, the *Guide to Networking groov*.

4 Connect the power supply

Plug the small connector on the power supply into the power terminal on the bottom of the *groov* Box, and tighten the screws. Plug the other end into a standard 120 or 240 VAC outlet.

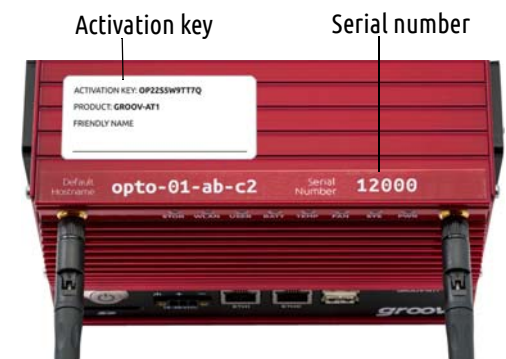


5 Turn on the *groov* Box

Briefly press and release the On/Off button. Wait until the SYS LED has stopped blinking and is solid green. Also, take a look at the LNK ACT light for ETH0. If the cable is properly connected, the LNK ACT light should be on or blinking.

6 Activate the *groov* Box and get the license file

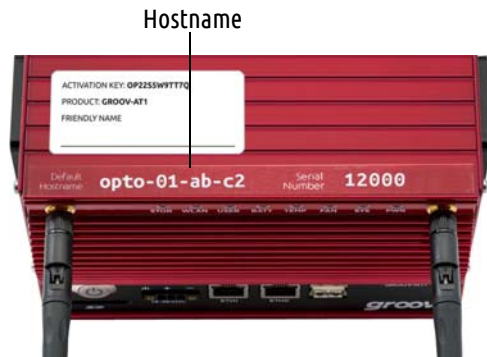
- Open a web browser and go to activate.groov.com.
- Log in using your email address and your My.Opto22 password. You may have set up your free My.Opto22 account when you purchased your *groov* Box. If you don't have a My.Opto22 account, enter your email address and other information, and the account will be created.
- Follow the on-screen instructions to activate your *groov* Box and download the license file. The activation key is printed on the label you affixed to the *groov* Box. When asked for the serial number, you'll find it on the label on the top of the device.
- After activating the *groov* Box and downloading the license file, return to this Quick Start and continue with step 7.



7 Open *groov*

- Make sure the SYS LED has stopped blinking.
- In your browser, enter `https://` and your *groov* Box's hostname as the URL. For example, if the hostname is `opto-00-d2-dc`, you type `https://opto-00-d2-dc`

NOTE: If the security warning does not appear, your network configuration is probably unique. Please see the *groov* Box User's Guide.



- Accept the security warning.
 - For Chrome:** Click "Proceed anyway."
 - For Firefox:**
 - Expand "I Understand the Risks."
 - Click Add Exception to open the Add Security Exception dialog box.
 - Select "Permanently store this exception."
 - Click Confirm Security Exception.
 - For Internet Explorer:** Click "Continue to this website (not recommended)."

The **Welcome to *groov*** window opens in your web browser.
- Click Next.

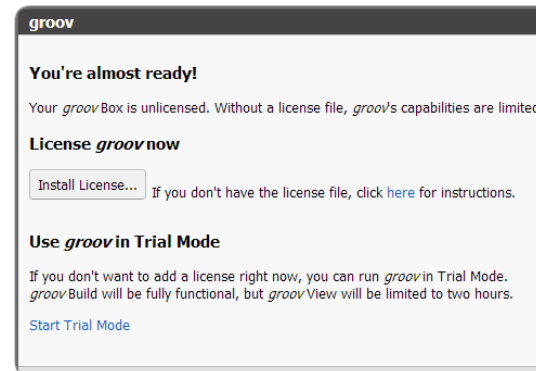
8 Create a *groov* Admin account and install your license

Follow the on-screen instructions to create a username and password for *groov* Admin. The Admin account is for administrative tasks such as changing or editing the network connections and updating the *groov* Box.

CAUTION: Write down your Username and Password, and keep them in a safe place. You will need this information each time you log in. If you lose your login information, you will have to reset the *groov* Box to factory defaults, which will erase your project. There is no password recovery option.

Make sure to install your license file. Without an installed license, *groov* will only work for two hours.

- When prompted, click Install License.
- Browse to the license file, then click Open. Your license is now installed.



9 Create a *groov* Build account

A Build account lets you create and edit a project in *groov* Build.

- When prompted, enter a new username and password. Enter the password again to confirm.
- Click Create *groov* Build Account.
- Click Go to *groov* Build. *groov* Build opens in your browser. If you have any trouble opening *groov*, see Troubleshooting in Form 2027, the *groov* User's Guide.

Welcome to
groov
mobile made simple.™

That's it! You're finished with initial setup and ready to create your *groov* project.

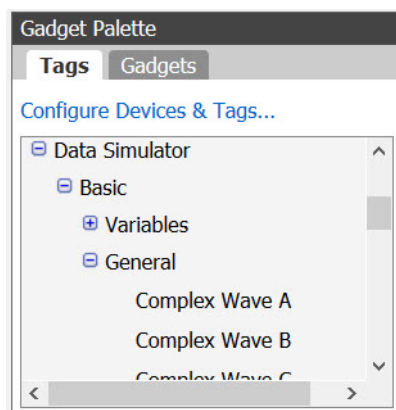
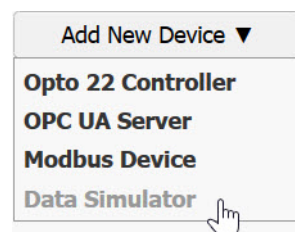
Go to *groov* Build!

10 Get a tag database

You can add a tag database from an Opto 22 controller, an OPC UA-compatible server, or a Modbus/TCP slave device. For more information, see Form 2027, the *groov* User's Guide.

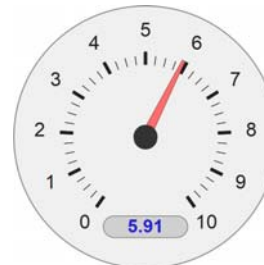
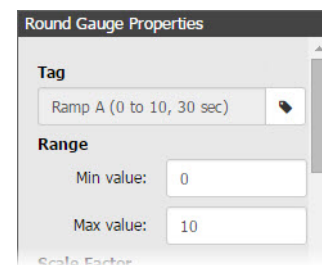
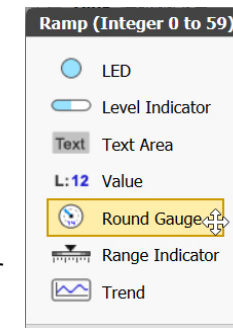
For this demonstration we'll use tags from *groov*'s built-in Data Simulator.

- In Build, choose Configure > Devices and Tags.
- Click Add New Device and choose Data Simulator.
- Close the Configure Devices and Tags dialog box and notice that the Data Simulator tags are available in the Gadget Palette.



11 Build your operator interface

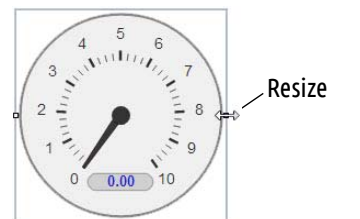
- On the left side under Pages, click Add Page.
- Type a new name for the page, then click OK.
- With the Tags tab selected in the Gadget Palette (lower-right corner), expand the list of tags for Data Simulator > Basic > General.
- Choose Ramp A (0 to 10, 30 sec).
- Double-click Round Gauge in the pop-up menu.
- Select the gauge. In Gauge Properties (upper right), enter 0 as the Min Value and 10 as the Max Value.



- Select File > Save All Changes and Switch to *groov* View.
- You should now see the Round Gauge running in View. The needle shows the tag's current value.

12 Adjust the handheld layout

- Click the gear symbol in the upper-right corner of View, and select Switch to *groov* Build.
- Click the Handheld tab, and then resize the gadget.
- Switch back to the Desktop & Tablet layout and notice that the gadget maintains its original size in that view.



View your project on a mobile device:

- Make sure the mobile device is on the same network as your *groov* Box.
- Open a browser on the mobile device and enter `https://` and your *groov* Box's hostname as the URL, just as you did on your computer in step 7.
- Accept the security warning. You'll see the work you just created on your smartphone or tablet. Now you're *groovin*!

Back up your project: As you work on your project, make sure to back up frequently in *groov* Build. For more information, see the *groov* User's Guide.

To get updates at any time: Go to manage.groov.com. For update instructions, see the *groov* Box User's Guide on the *groov* Box CD.