

PCIe-AC51 ADAPTER CARD QUICK START

Use this *Quick Start* to install the PCIe-AC51 adapter card and the Pamux® Systems Software Development Kit (SDK), a free download from the Opto 22 website.

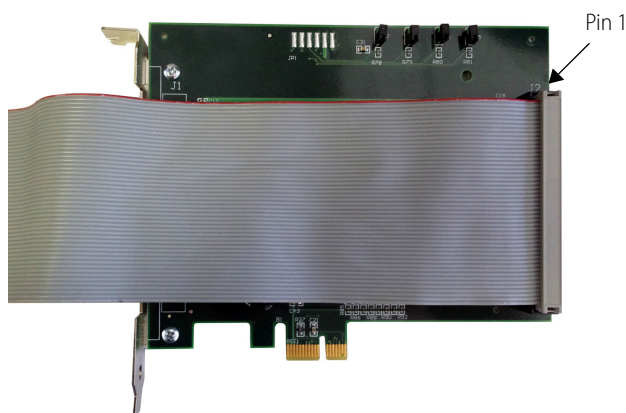
For additional hardware and software information, see Opto 22 form 1459, *PCI-AC51 and PCIe-AC51 User's Guide*, form 1459. This guide is included in the SDK (or can be downloaded separately) and contains full instructions for installing and using the card and the SDK.

Installing the Adapter Card

You can install the PCIe-AC51 adapter card into any PCIe expansion slot on your computer. **Note the power requirements** listed in the Specifications table in form 1459, *PCI-AC51 and PCIe-AC51 User's Guide*.

CAUTION: Do not scratch this card or other cards in the computer, as scratching may irreversibly damage the card or other devices.

1. Turn off the computer. Remove the power cord and the computer's cover.
The power cord must be removed, as a spike may cause the computer to boot.
2. Before handling the card, discharge static electricity by touching the computer's metal chassis.
3. Starting with the connector end that allows the cable to lie flat, push the ribbon cable through one of the slot openings in the computer.
4. Run the cable across the top of the adapter card (so it covers the card) and attach the cable to the card, as shown.



5. Install the card in the expansion slot. Verify that the card is properly seated in the motherboard socket. Secure the card to the chassis.

6. Connect the other end of the cable to the I/O mounting rack. See form 0726, *Pamux User's Guide*, for more information.
7. Reinstall the power cord.
8. Turn on the computer. The BIOS automatically performs configuration the first time you boot up the computer with the card installed.

If a "Found New Hardware" message appears, simply click Cancel. The Pamux Systems SDK setup program will install the device driver automatically.

Installing the SDK

The SDK includes sample applications with source code, Windows drivers, and user documentation.

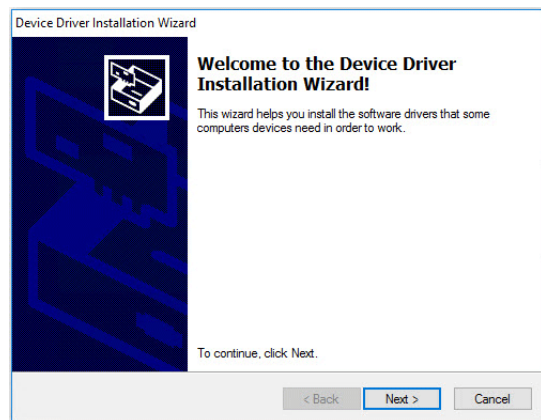
NOTE: If you are using an unsupported operating system or a non-PC hardware platform, you will need to write your own driver. For more information, see the [PCI-AC51 and PCIe-AC51 User's Guide](#).

TIP: To ensure reliable control operations, disable Sleep and Hibernation modes (by setting both sleep and hibernation time durations to "never") in your operating system's Power settings.

1. To start the Pamux Systems SDK setup, [download the SDK from our website](#), and double-click the installer.

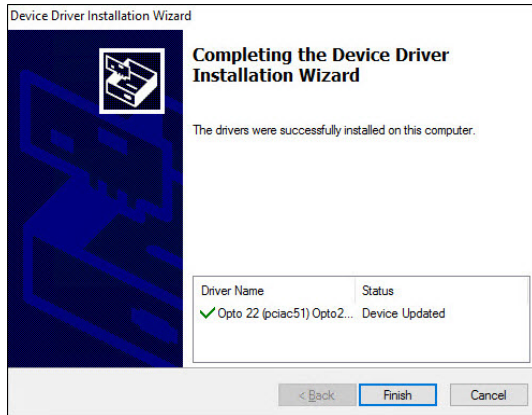
NOTE: If Windows Security dialog boxes appear, click the appropriate buttons (for example, Yes, Open, Run, or Install) to continue.

2. Follow the Setup Wizard's prompts to accept the License Agreement and select the location where the SDK will be installed. Note that if the SDK is already installed, the Setup Wizard prompts you to uninstall it before continuing.



3. On the Device Driver Installation Wizard screen, click Next to install the driver.

After the driver is installed, this screen appears:



4. Click Finish to complete the driver installation, and then click Finish again to complete the SDK installation and launch PamScan.exe.

For Help

If you have trouble installing or using the card and can't find the help you need in the *PCI-AC51 and PCIe-AC51 User's Guide*, contact Opto 22 Product Support:

Phone: 800-TEK-OPTO (800-835-6786 toll-free in the U.S. and Canada)
951-695-3080
Monday through Friday, 7 a.m. to 5 p.m. Pacific Time

Fax: 951-695-3017

E-mail: support@opto22.com

Website: www.opto22.com