

DOWNLOADING THE *groov* RIO LEARNING CENTER PACKAGE

To start learning how to program and manage your *groov* RIO Learning Center, download the *groov* RIO Learning Center Package from the Opto 22 website:

1. Go to the Opto 22 website (www.opto22.com) and enter “RIO Learning Center” in the search box. Select *groov* RIO Learning Center Package from the list of suggested search terms.
2. On the *groov* RIO Learning Center Package page, click Download and save the file to your computer.
3. Navigate to the folder where you stored the file and uncompress it.
4. Follow the instructions in the *Learning Center Package Installation Technical Note* (form 2362), included in the download, to install these files on your Learning Center.

The *groov* RIO Learning Center Package includes pre-configured backup files that you can restore to your *groov* RIO. With one of these backup files restored, you can begin exploring the configurations and springboard your project development.

For free online training, visit training.opto22.com. New courses are added frequently.

groov RIO Learning Center Setup

WELCOME!

Before you begin, check that you received all of the following items in your package:

- *groov* RIO (in a box)
- ICTD temperature probe with resistor
- Acrylic stand with the following hardware mounted:
 - DIN rail
 - USB Type-C connector
 - Load Panel: 2 illuminated pushbuttons; 1 potentiometer; 1 temperature probe connector

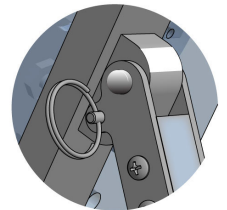
You will need to supply the following:

- A USB Type-C to USB Type-A cable (This cable powers the LEDs on the buttons.)
- USB Type-A wall charger
- An Ethernet cable (In addition to providing a wired connection to your network, the Ethernet cable can provide power to your *groov* RIO, as long as the other end is connected to a Power over Ethernet [PoE] switch.)
- A username and password that follows strong security recommendations
- A computer or mobile device on the same network as the Learning Center

NOTE: To preserve the clean look of the acrylic stand, remove any fingerprint stains with a plastic cleaner (for example, Plexus® plastic cleaner), not a glass cleaner.

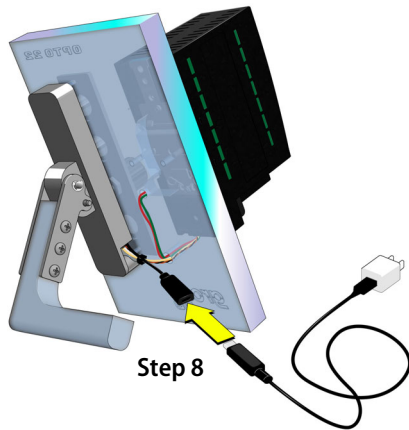
ASSEMBLING THE LEARNING CENTER

1. Make sure you removed all contents from the Learning Center box and the RIO box.
2. Adjust the kickstand in the back and connect the USB Type-C cable:
 - a. Place the Learning Center on a stable surface, face side down.
 - b. Locate the ring-and-pin on one side of the handle, near the acrylic surface. Hook your finger into the ring and pull out the pin.
 - c. Adjust the handle/kickstand to align the holes, and then reinsert the pin.



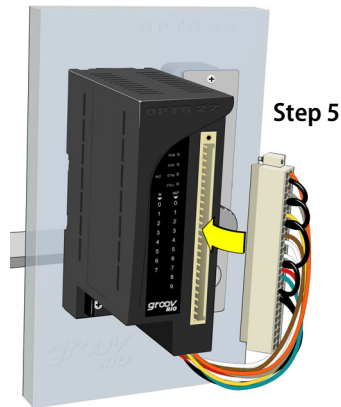
Step 2b

3. Grab the Learning Center and turn it right-side up, so that the bottom edge of the acrylic stand and the kickstand sit on the surface.
 4. Push down on the bundle of cables to move them out of the way and then mount *groov* RIO on the DIN rail.
 5. Connect the I/O connector to the *groov* RIO.
 6. Connect an Ethernet cable to one of the two network interfaces on the underside of the *groov* RIO. Use ETH 1 to power the *groov* RIO over Ethernet (PoE).
 7. Provide power through PoE (step 6) *OR* connect a 10–32 V DC power source.
- IMPORTANT:** If using PoE, do NOT connect a power supply to terminals.
8. Connect the USB Type-C cable to the USB Type-C connector and to your power supply.

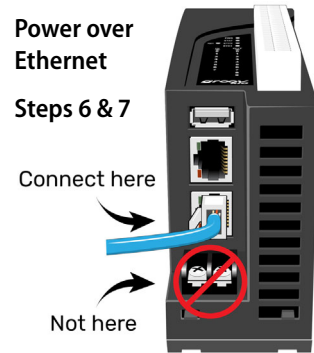


Step 8

9. Connect the temperature probe to the temperature probe connector on the acrylic stand.

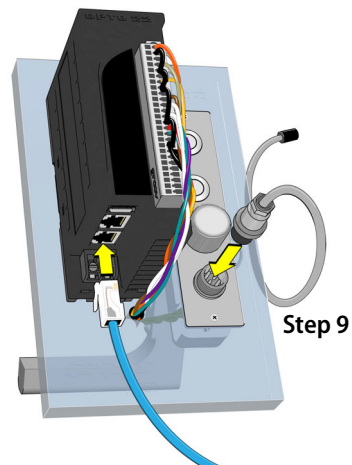


Step 5



Power over Ethernet

Steps 6 & 7



Step 9

groov RIO Learning Center Setup

10. Connect the Ethernet cable to your network. If using PoE, connect to a PoE switch.
11. Turn the Learning Center around so you can see the front. Wait for the PWR and STAT LEDs to turn a steady green.

INITIALIZING THE LEARNING CENTER

1. Open a web browser on your computer and type in the following as the URL, entering the Hostname that's on the *groov* RIO's side label in place of <hostname>:
`https://<hostname>`.
If your browser can't locate your RIO, you can use *groov* Find to locate it.
2. If your browser displays a warning about security, you can accept the warning and proceed. Depending on the browser, the message may look different.
3. Click Let's get started!
4. In the Create an Account screen, type in a username and a password that follow strong security recommendations. This username and password is the first administrator level user for your Learning Center. **Remember it!** *groov* RIO does not provide a way to recover a lost password or username. Click Create Account.
5. We recommend that you check that the version of *groov* RIO firmware running on the Learning Center is the latest version. Click Info and Help > About.
6. Write down the System Version: _____
7. Open another tab on your browser and go to opto22.com. Search for "*groov* RIO firmware". Select the page and note the version number. Compare this version number with the System Version number you noted in [step 6](#) above:
 - If the version number on the webpage is the same as or lower than the System Version number, then you have the latest firmware installed on your RIO! You can skip the rest of this step.
 - If the version number on the webpage is higher than the System Version number, you'll need to download and install the newer version of the firmware. Follow instructions in "Updating Firmware on a *groov* RIO" in the [groov RIO User's Guide \(form 2324\)](#). You can skip step 5 (creating a backup of your unit) and step 6 (deactivating the Ignition Edge license).

Your *groov* RIO Learning Center is now up and running!

(Continued on back)